



Indie Commerce Tools

What is Indie Commerce?

Indie Commerce is an e-commerce platform offered by the American Booksellers association. Anthology has added functionality to assist your store with the IndieCommerce updates. You can export inventory records, as well as do searches on your IndieCommerce website via Anthology. Please visit http://www.bookweb.org/eCommerce_eBooks for more details from the ABA. Note, while Anthology can Export the file each night via the Scheduler, uploading the files to the IndieCommerce is a function they will need to assist with. Check their help system page for more details- <http://www.bookweb.org/indiecommerce/adding-files>

Configuration

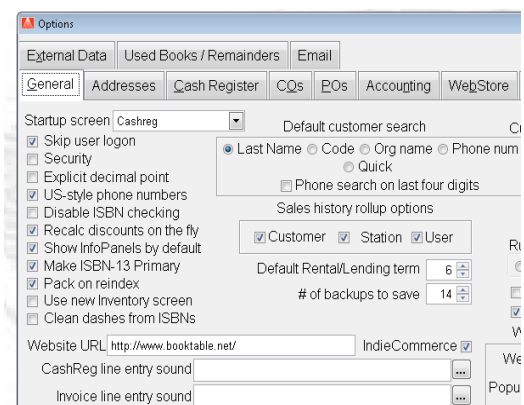
Once you have signed up and completed the IndieCommerce setup with the ABA, there are a couple of settings in Anthology to be done. The following pages will review each.

- Enabling CR searches of IndieCommerce website
- Exporting IndieCommerce data
- Adding IndieCommerce to nightly Scheduler

Enabling CR searches of IndieCommerce website

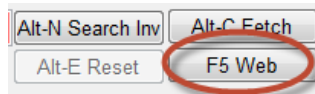
Opening any web browser, go to your store's home page. Copy the entire website url address, including the HTTP://. With everyone else briefly out of the program go to Tools | Options | General tab. On the bottom left, enter the store website url into the "Website URL" field. Also check the IndieCommerce box. F10 to Save Changes.

Go to Master Files | Web Resources. Select the existing IndieCommerce entry and go to Details tab and ensure the "Enabled" box is checked. F10 to Save Changes and Close/Reopen to program to take effect.

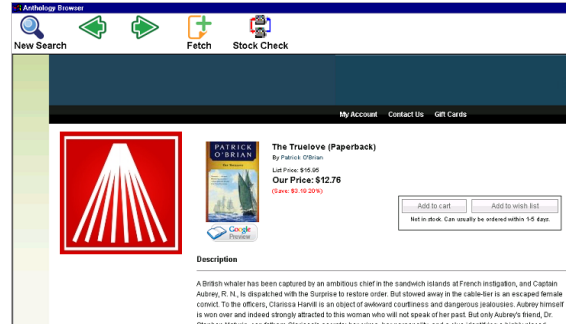


Searching IndieCommerce site from within CashRegister

While in the Sales | Cash Register screen, select the F2 Lookup for Inventory

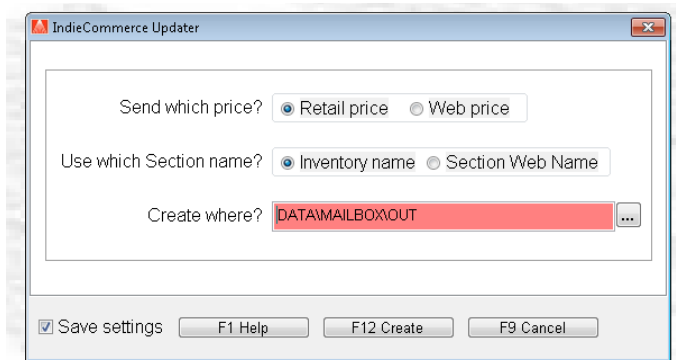


Assistant. Enter the keyword(s) to search by and click the “F5 Web” button to the right. This will bring up a simple web page window showing you the search results on the store’s webpage. Select the title of the specific item for more details.

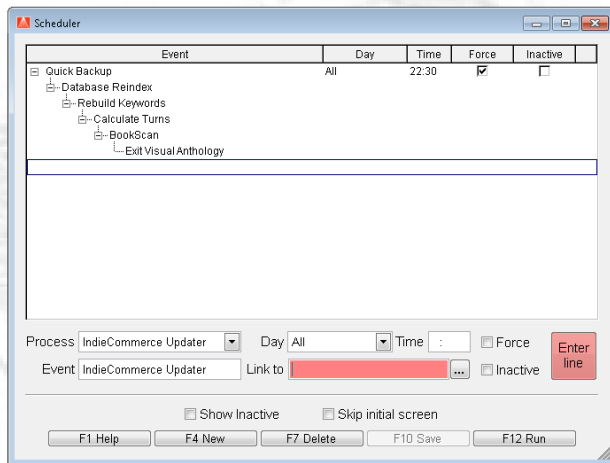


Exporting IndieCommerce data

A test export should be done before adding the task to the scheduler. Go to Tools | Special Import/Export | Indie Commerce Updater. Select the settings desired and browse to the directory to store the exported files. Check the “Save Settings” box to preserve these settings. F12 Create to test the export.



Adding IndieCommerce to nightly Scheduler



Once the updater has been tested, the task can now be added to the Anthology list of scheduled tasks. Go to Tools | Scheduler | Maintain.

Do F4 New and select the “IndieCommerceUpdater” from the Process drop down list. Select the “Link To” drop down list and select the last task listed. Enter Line once back at the scheduler screen and F10 Save.

Note, it may be necessary to first F7 Delete the very last entry if it is the “Exit Visual Anthology” in order for the IndieCommerce task to run before the program closes. Once the Exit

Anthology task is temporarily deleted, add the Indie Commerce task and Link to the last task listed. Then F4 New and reselect the Exit Anthology option, linking it to the previous task of Indie Commerce. F10 to Save changes.